

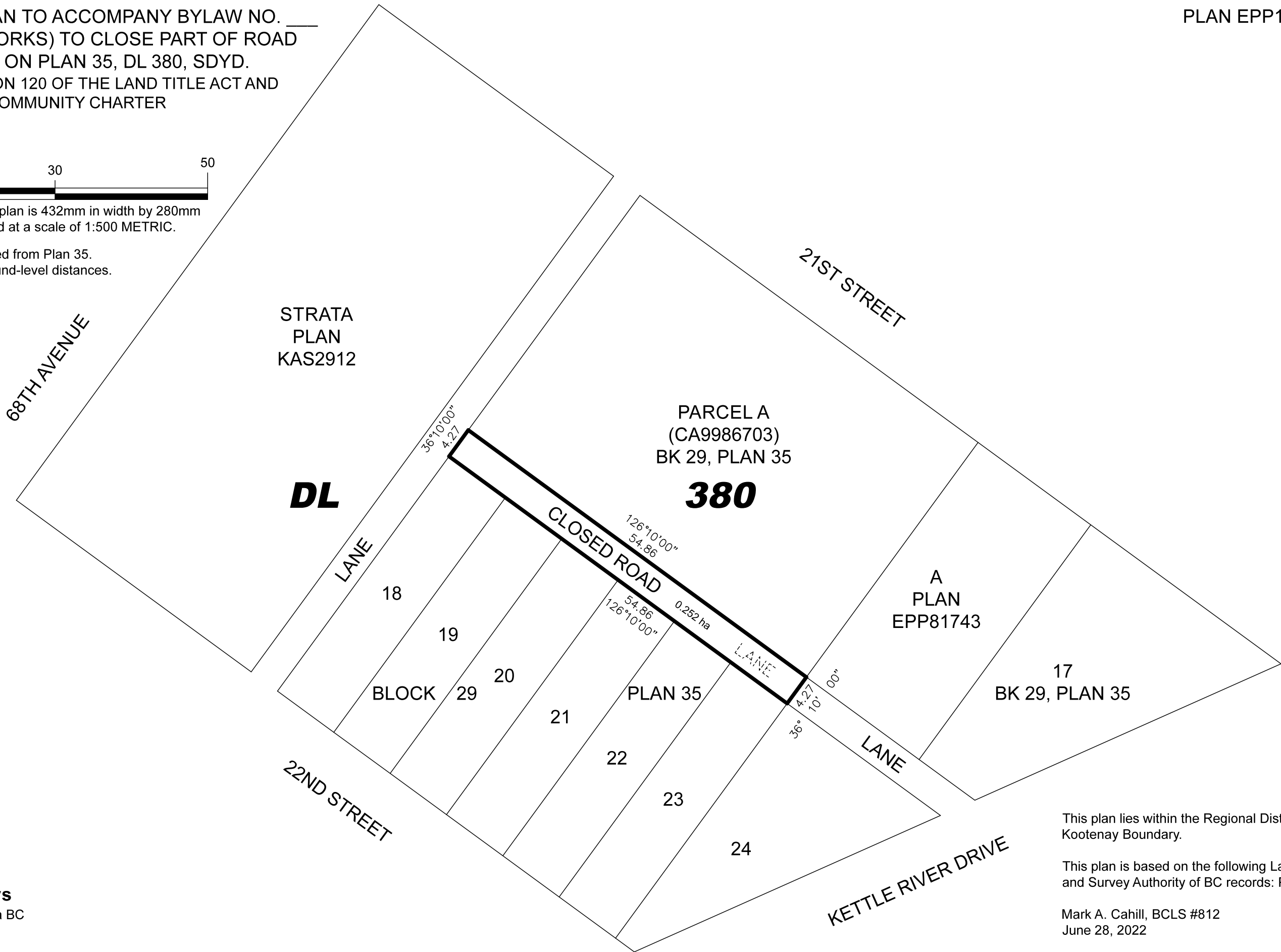
EXPLANATORY PLAN TO ACCOMPANY BYLAW NO. ____
(CITY OF GRAND FORKS) TO CLOSE PART OF ROAD
(LANE) DEDICATED ON PLAN 35, DL 380, SDYD.
PURSUANT TO SECTION 120 OF THE LAND TITLE ACT AND
SECTION 40 OF THE COMMUNITY CHARTER
BCGS 82E.008
SCALE 1:500 METRIC

PLAN EPP122288



The intended plot size of this plan is 432mm in width by 280mm in height (B-size) when plotted at a scale of 1:500 METRIC.

Bearings are magnetic, derived from Plan 35.
Distances are horizontal, ground-level distances.



DA Goddard Surveys
1315 St. Paul Street, Kelowna BC
File: 421070-EX

This plan lies within the Regional District of Kootenay Boundary.

This plan is based on the following Land Title and Survey Authority of BC records: Plan 35

Mark A. Cahill, BCLS #812
June 28, 2022