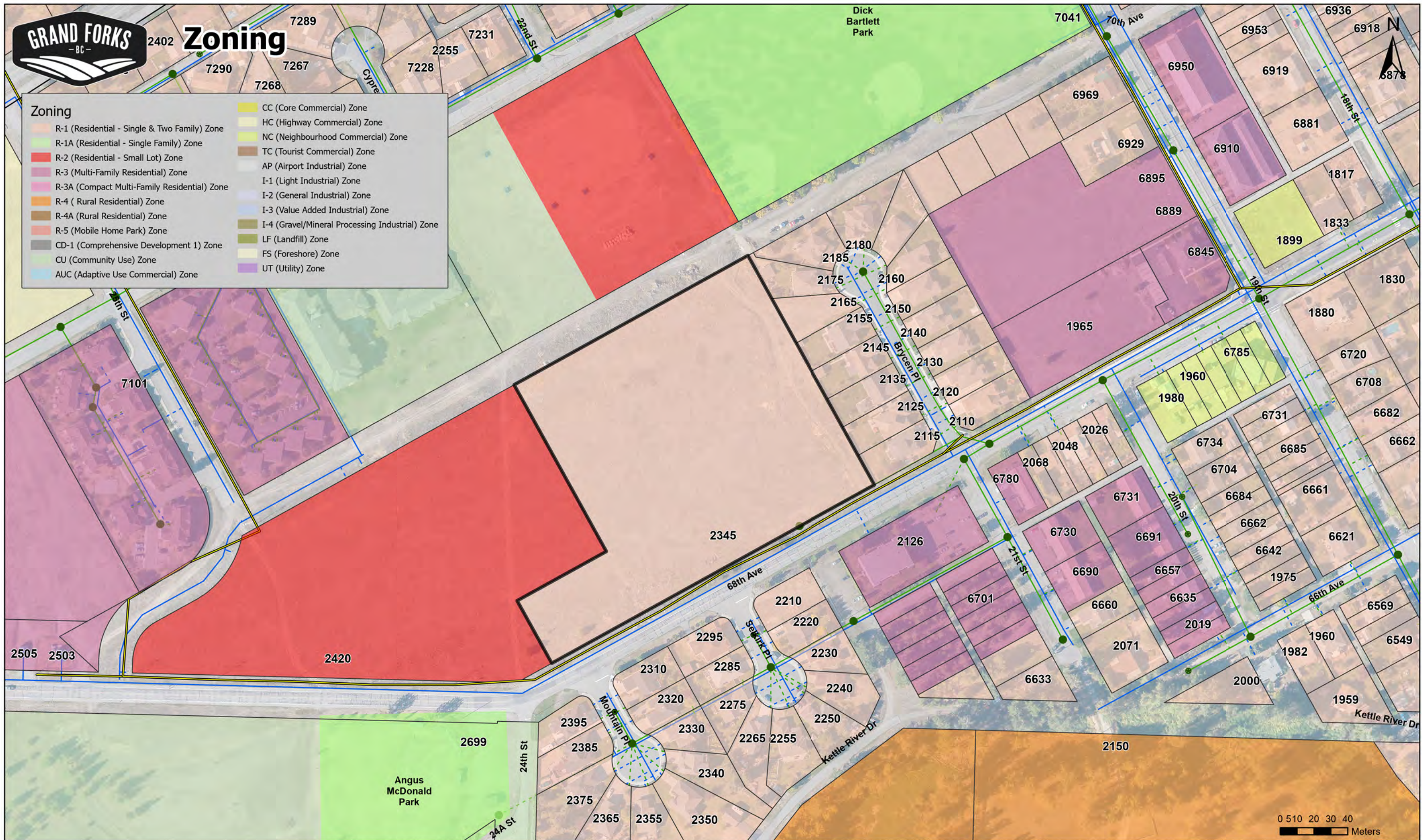


Scale 1: 2,257

Legal Information

Plan: KAP35	Section:	Jurs: 210	Lot Area: 6.689
Block:	Township:	Roll: 874000	Area Unit: acr
Lot: Z	Land District: 54	PID: 008286701	Width (ft):
District Lot: 380	Electoral Area: City of Grand Forks		Depth (ft):
Street: 2345 68TH AVE			
Description: Lot Z, Plan KAP35, District Lot 380, Similkameen Div of Yale Land District, Except Plan 10223 KAP47308 KAP56956			



Current Date: April 25, 2022
Map Produced by: acameron
Scale: 1:2,000

The City of Grand Forks makes every effort to ensure that this map is free of errors but cannot guarantee accuracy or fitness for any purpose, and does not provide warranty of any kind. The City accepts no liability for any expenses, losses, damages or costs relating to the use of this map or data. Data must not be used for direct marketing or be used in the breach of the privacy laws. This map must not be used for direct marketing or be used in the breach of privacy laws, it is intended only for the requested use. The data must not be circulated or copied without prior consent of the City of Grand Forks.



OCP Designation

Land Use

- Agricultural/Rural
- Institutional
- Low Density Residential
- Medium Density Residential
- Park & Open Space



Current Date: April 25, 2022
Map Produced by: acameron
Scale: 1:2,000

The City of Grand Forks makes every effort to ensure that this map is free of errors but cannot guarantee accuracy or fitness for any purpose, and does not provide warranty of any kind. The City accepts no liability for any expenses, losses, damages or costs relating to the use of this map or data. Data must not be used for direct marketing or be used in the breach of the privacy laws. This map must not be used for direct marketing or be used in the breach of privacy laws, it is intended only for the requested use. The data must not be circulated or copied without prior consent of the City of Grand Forks.



Current Date: April 25, 2022
 Map Produced by: acameron
 Scale: 1:2,000

The City of Grand Forks makes every effort to ensure that this map is free of errors but cannot guarantee accuracy or fitness for any purpose, and does not provide warranty of any kind. The City accepts no liability for any expenses, losses, damages or costs relating to the use of this map or data. Data must not be used for direct marketing or be used in the breach of the privacy laws. This map must not be used for direct marketing or be used in the breach of privacy laws, it is intended only for the requested use. The data must not be circulated or copied without prior consent of the City of Grand Forks.