



# Population and Public Health

Dr. Sue Pollock, Medical Health Officer  
Melissa Cline, Community Health Facilitator

Kootenay Boundary

October 10<sup>th</sup> 2023



# Land Acknowledgement

---

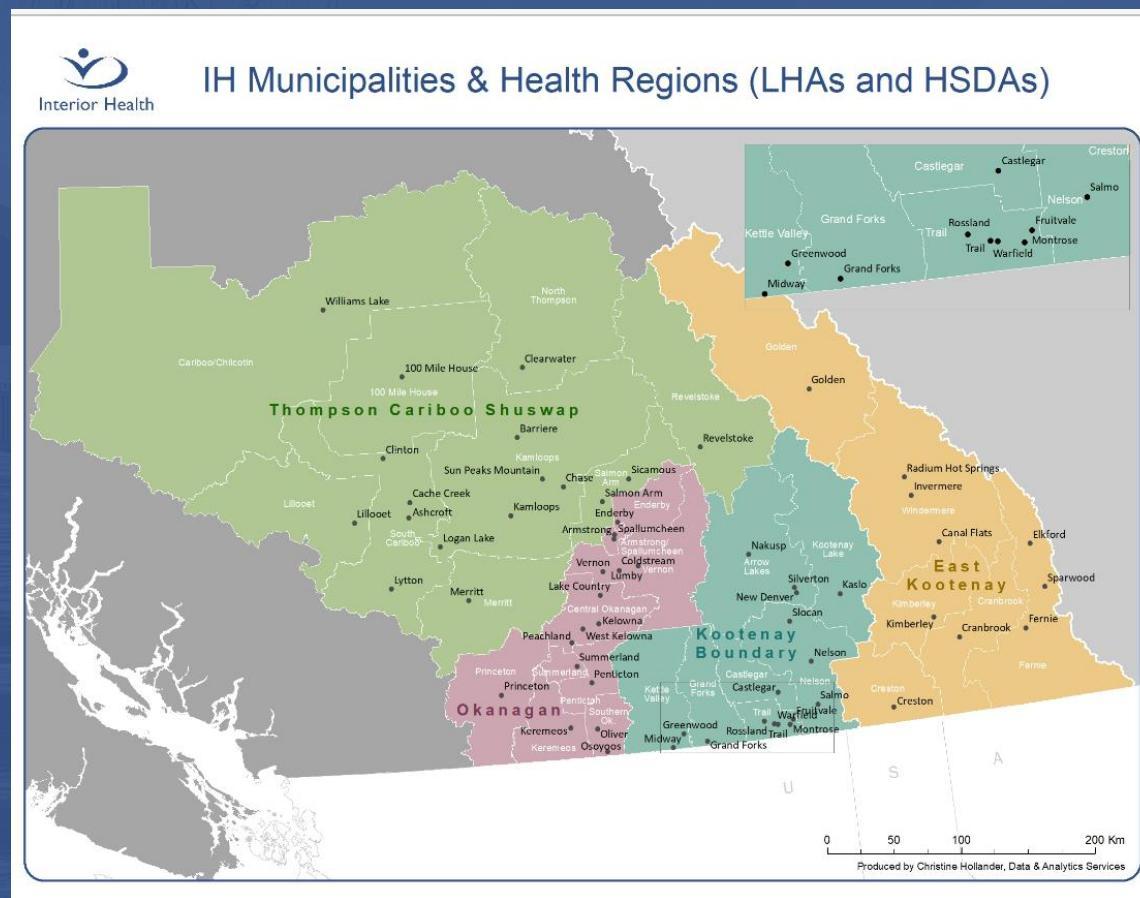
Interior Health would like to recognize and acknowledge the traditional, ancestral, and unceded territories of the Dǎkelh Dené, Ktunaxa, Nlaka'pamux, Secwépemc, St'át'imc, Syilx, and T̓silhqot'in Nations where we live, learn, collaborate and work together.





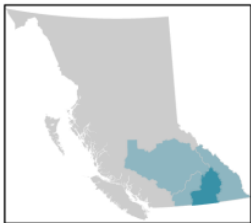
# Interior Health Authority

## IH Municipalities & Health Regions (LHAs and HSDA's)



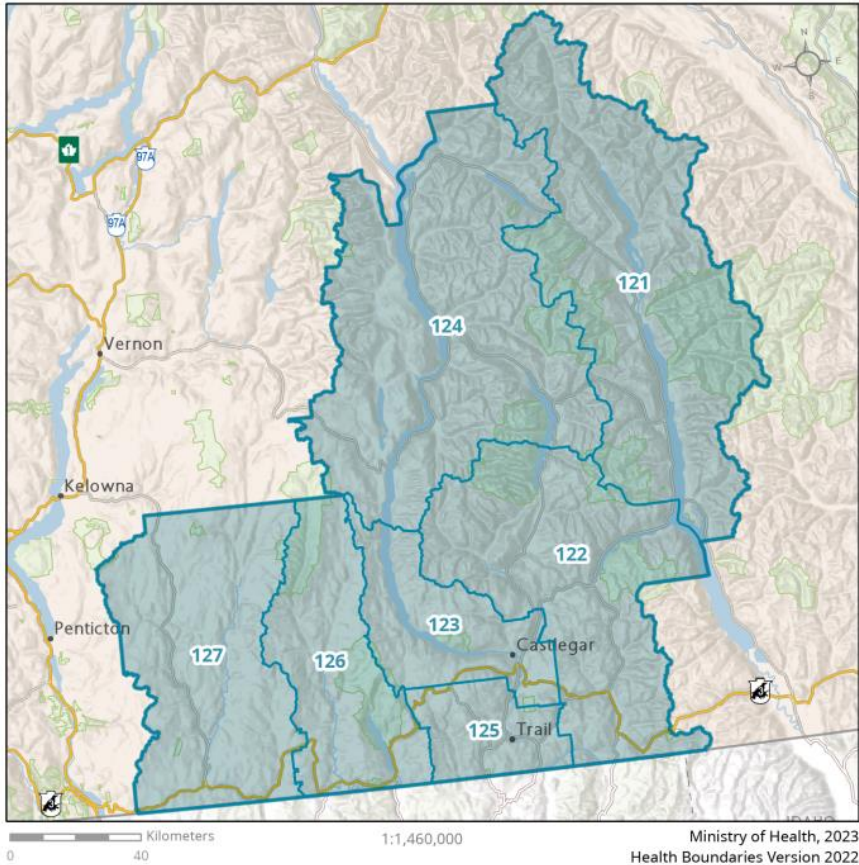
# Health Service Delivery Area(HSDA)

## 12 Kootenay Boundary



**Local Health Area (LHA)**

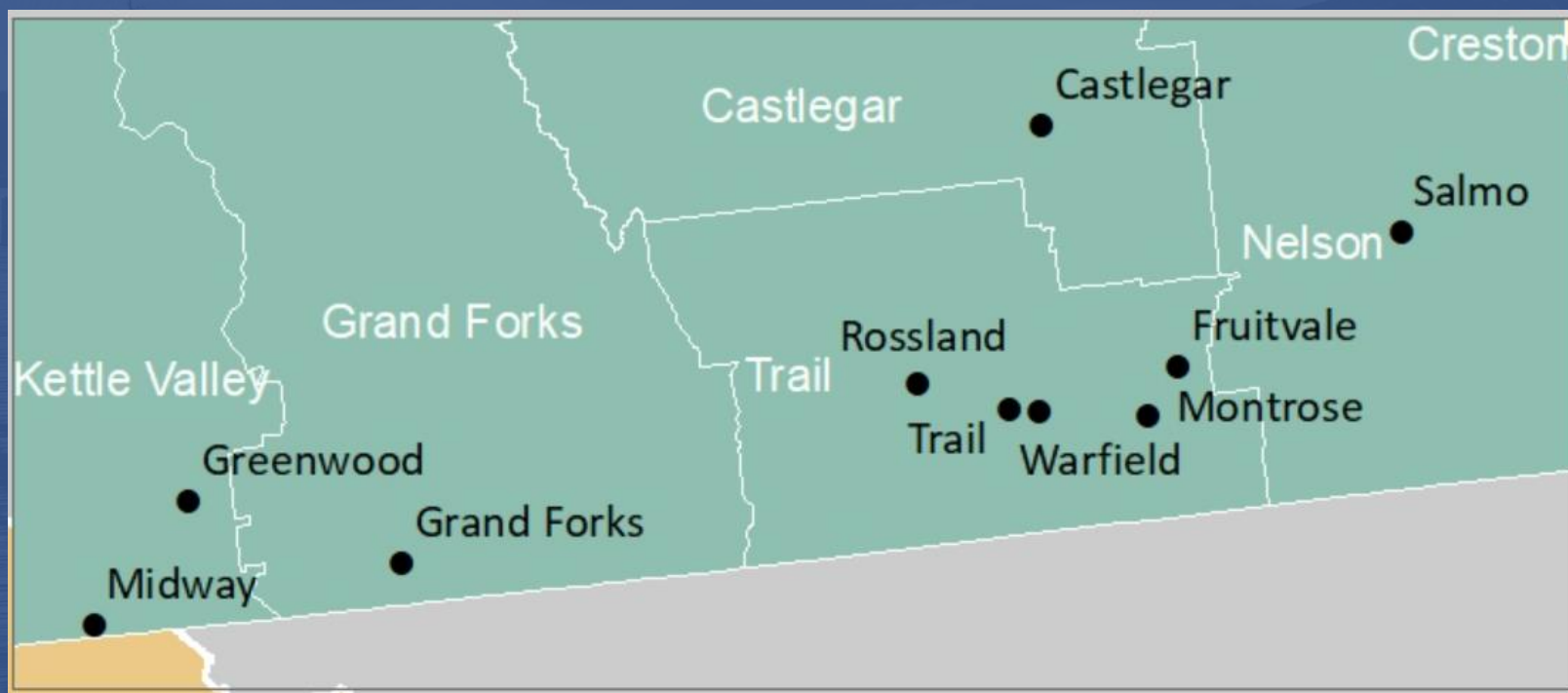
- |                   |                   |
|-------------------|-------------------|
| 121 Kootenay Lake | 125 Trail         |
| 122 Nelson        | 126 Grand Forks   |
| 123 Castlegar     | 127 Kettle Valley |
| 124 Arrow Lakes   |                   |





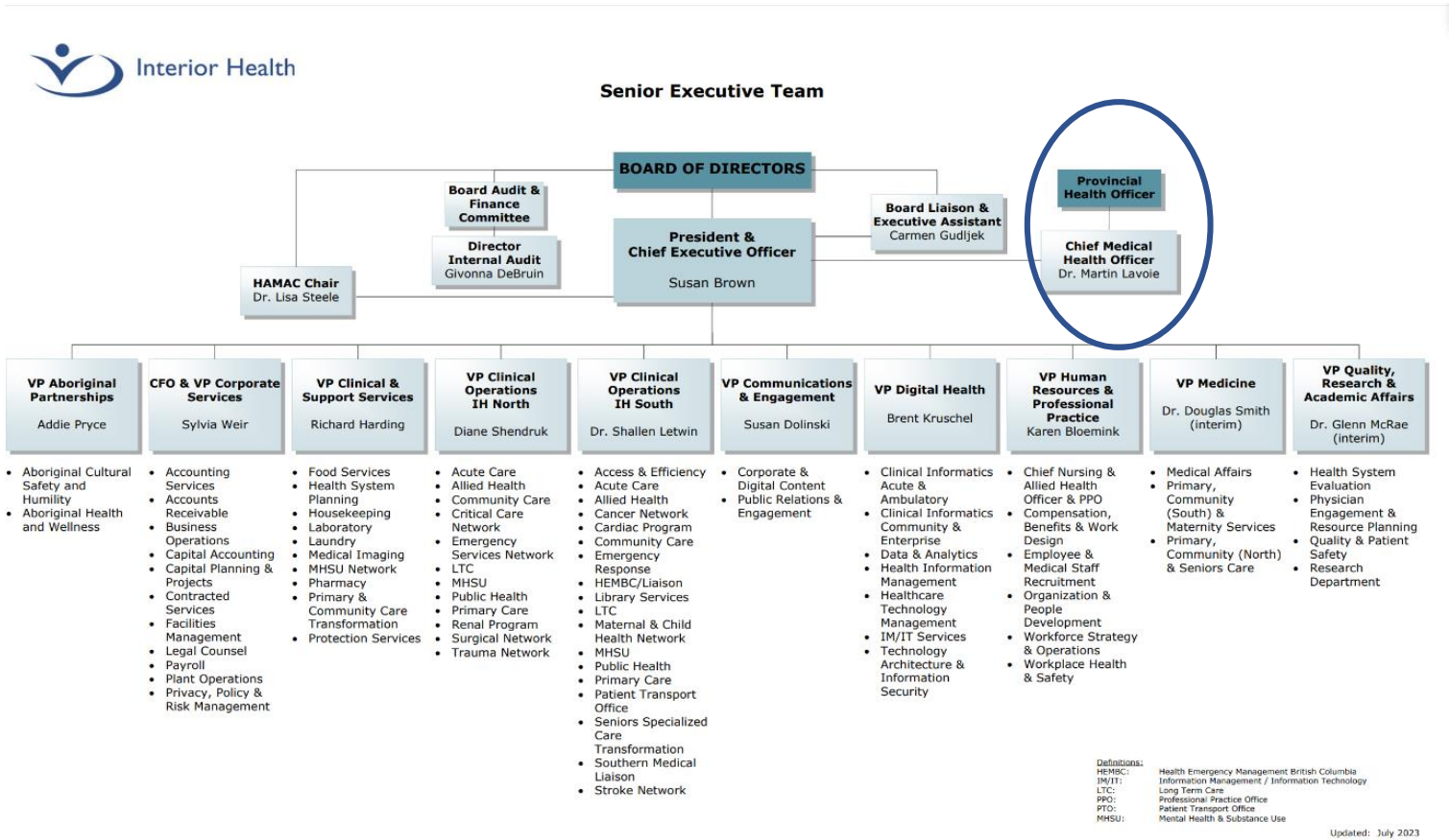
# Interior Health Authority

## IH Municipalities & Health Regions(LHAs and HSDA's)



# Interior Health Authority

## Senior Executive Team

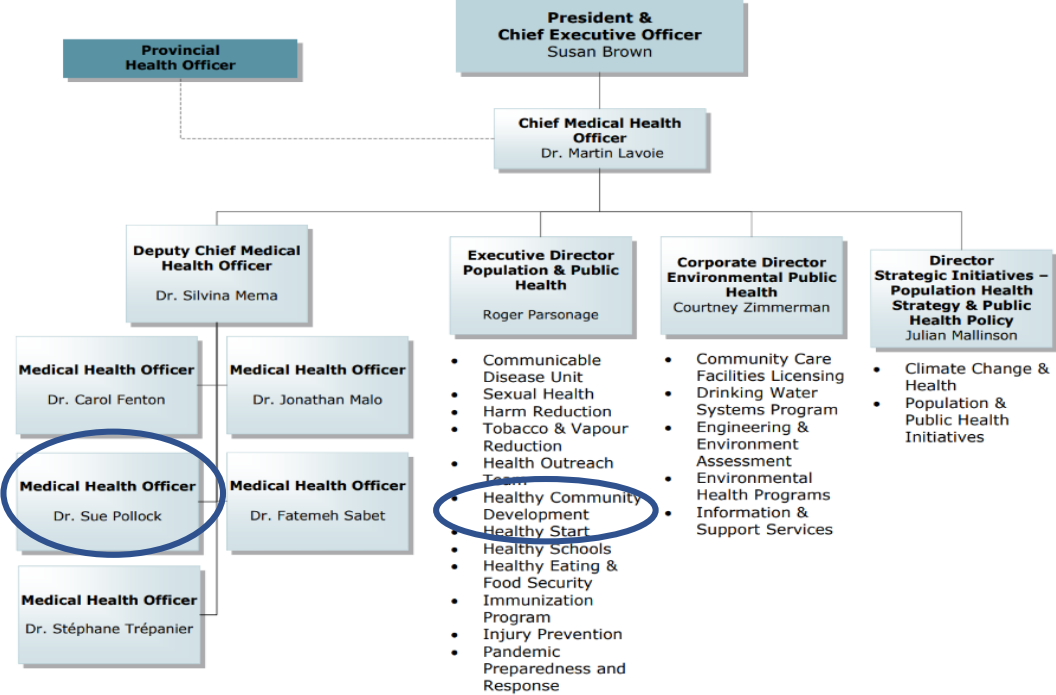


# Office of the Chief Medical Health Officer

## Population and Public Health Program



**Office of the Chief Medical Health Officer and  
Population & Public Health**  
Structure and Functional Responsibility



Updated: July 2023



# Population and Public Health Program

## Medical Health Officer

- We focus on disease and injury prevention and control
- We monitor and assess the health needs of a population and develop, implement and evaluate strategies for improving health and well being
- We have legislative responsibilities under the Public Health Act
- We report to the Provincial Health Officer and Health Authority





# Medical Health Officer

## Legislative Responsibilities

Medical Health Officers derive their powers and duties from Orders in Council made by the Lieutenant Governor in Council, under section 71 of the *Public Health Act*.

Regional health authority, on Provincial Health Officer recommendation, request this designation to authorize Medical Health Officers to carry out their statutory powers and duties

- Designated to act within a described geographic area
  - usually the health authority



# Medical Health Officer

## Knowledge Areas

- \* Environmental health protection
- \* Communicable disease control
- \* Health promotion
- \* Disease and injury prevention
- \* Public health related legislation
- \* Public health program delivery
- \* Administration and management



# Population and Public Health Program

## Population Health

The Population Health team works to improve physical and mental health outcomes across the population by promoting wellbeing and reducing health inequalities.







Mike Adams  
Team Lead



Jenny Green  
Team Lead

## Healthy Community Development Team



HCD Team May 2023



[healthycommunities@interiorhealth.ca](mailto:healthycommunities@interiorhealth.ca) or [hbe@interiorhealth.ca](mailto:hbe@interiorhealth.ca)



# Healthy Communities Team

We support healthy community planning, policy and action by:



# What Challenges are we Facing?

-  1 in 3 people have a **chronic disease**
-  1 in 5 children live in **poverty**
-  We rely **too much on cars** instead of our feet
-  **Housing** is unaffordable for many
-  We are **getting older**
-  **Mental health** and well being are main priorities for our communities
-  Many do not have access to **healthy foods**
-  **Health inequities** exist in our communities
-  **High demand, cost, and pressures** on our emergency services and health care system





# Health is a Collaborative Effort

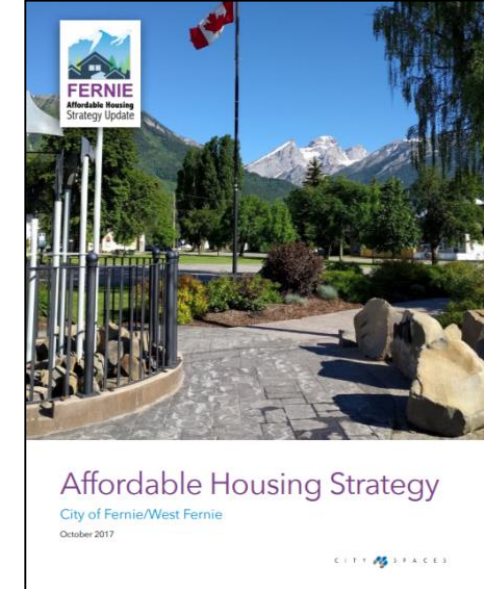
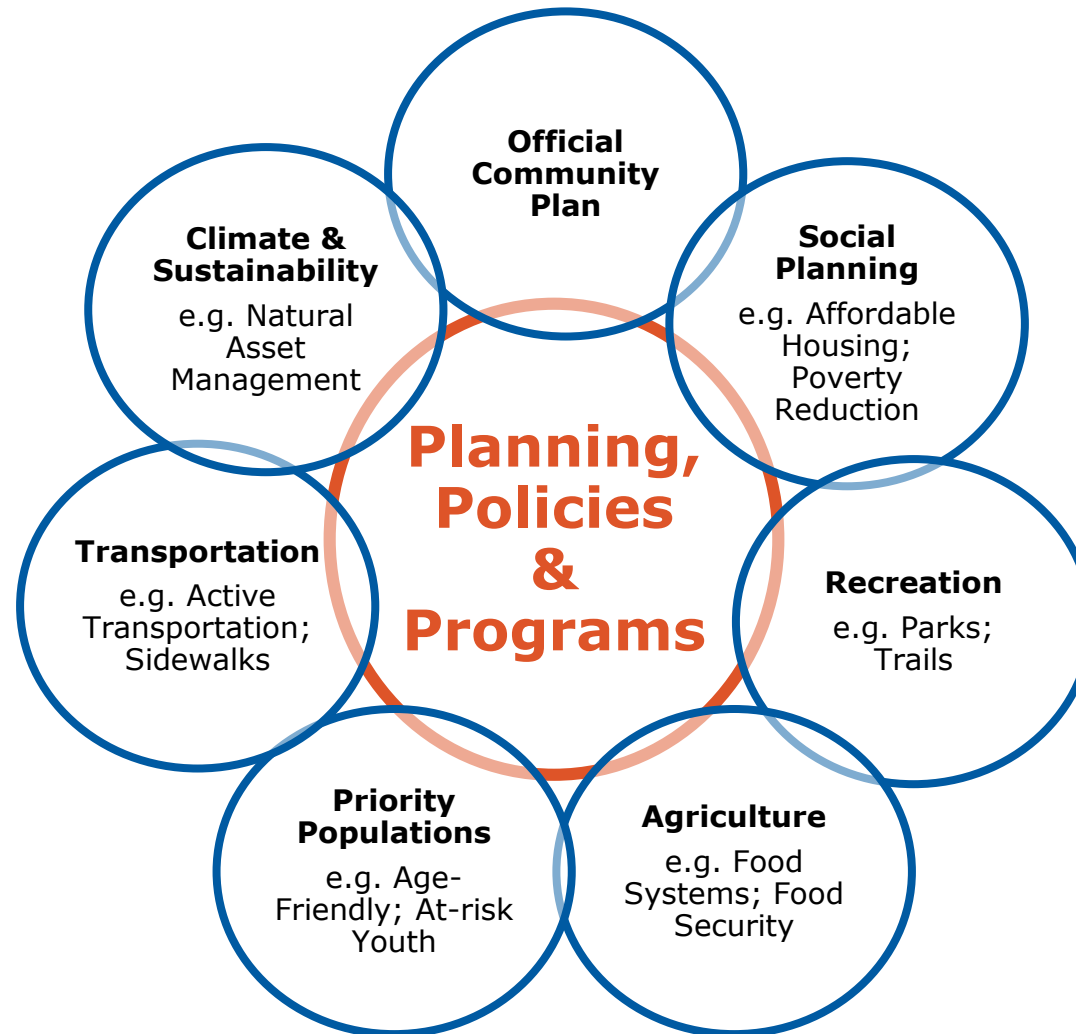
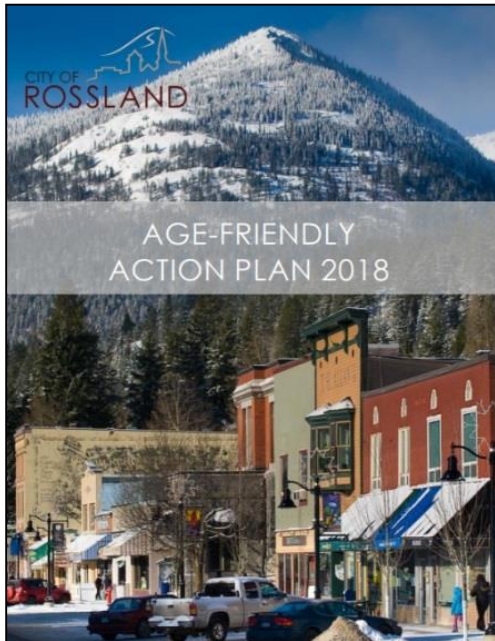


*"Many would be surprised to learn that the greatest contribution to the health of the nation over the past 150 years was made not by doctors or hospitals but by local government."*

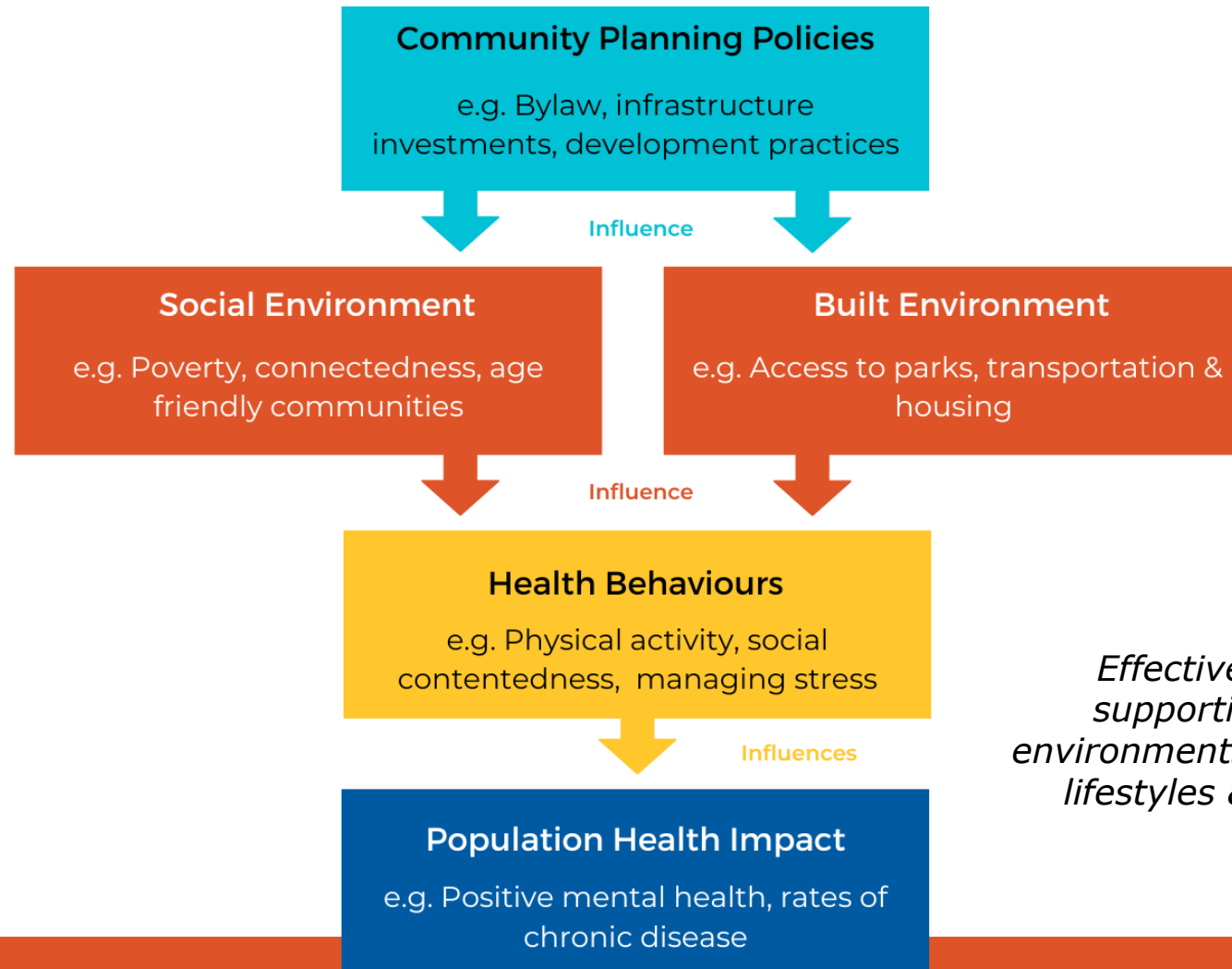
"The Health of a City" by Dr. Jessie Parfitt a public health physician from Oxford, England



# Community and the Building Blocks of Health



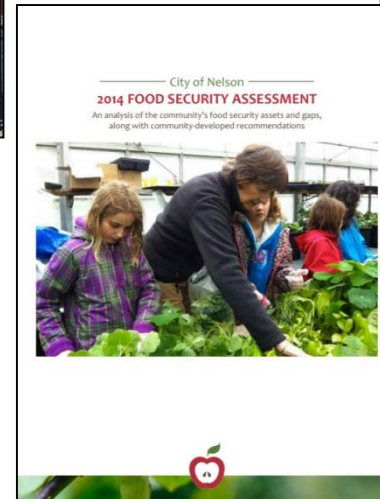
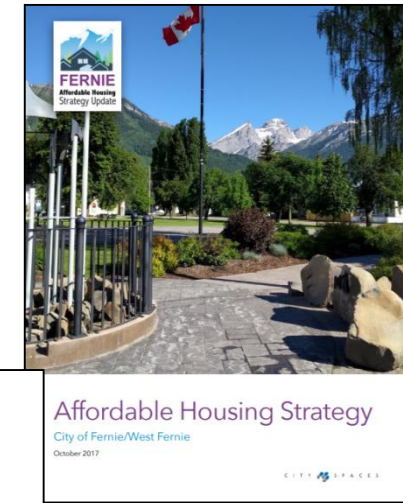
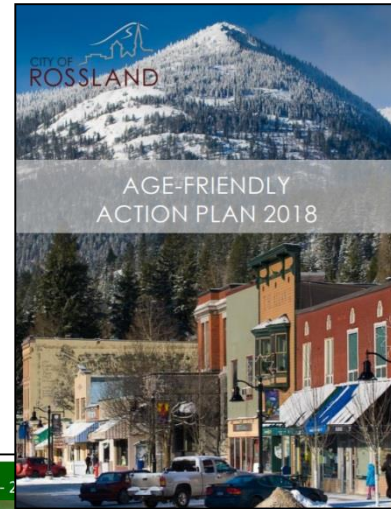
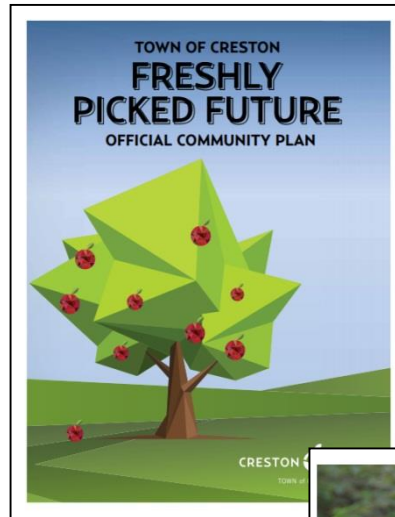
# Linking Health to Community Planning



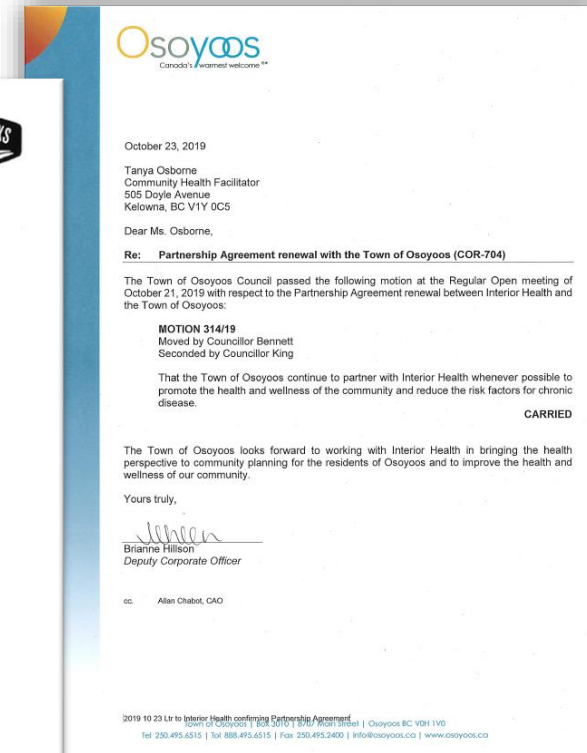
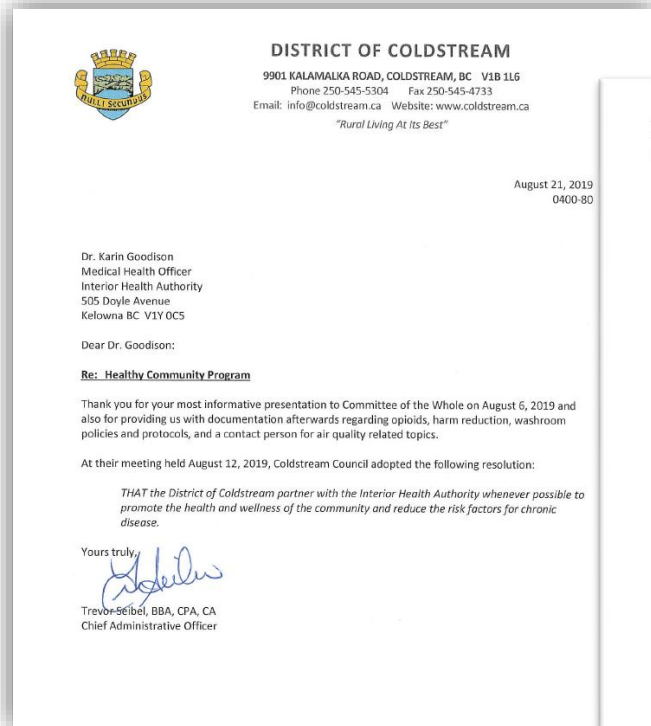
*Effective planning creates supportive social and built environments that promote healthy lifestyles & social connections*



# What can happen when we partner?



# Partnership Agreements



# Moving Forward together

Population Health and the Healthy Communities program would like to continue to partner and collaborate with local government elected officials and staff to promote health and wellness in the community and reduce the risk factors for chronic disease.

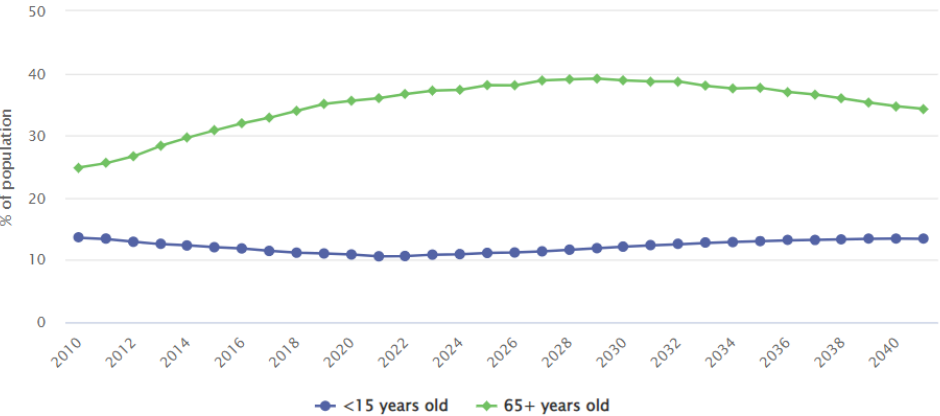




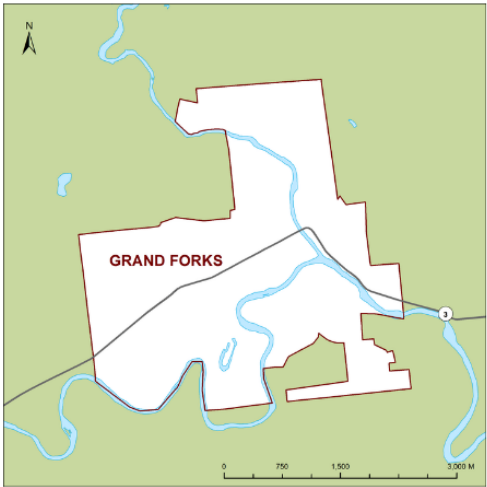
# Community Health Data

Current and projected youth and seniors populations for Grand Forks LHA

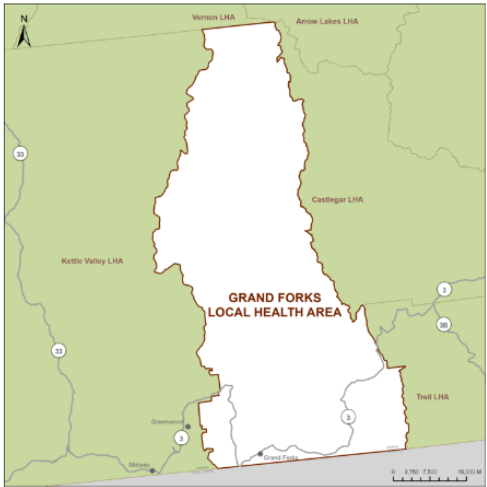
P.E.O.P.L.E., BC Stats, 2010–2041



Grand Forks



Grand Forks Local Health Area



73.4%

Percentage of population who are attached to a general practitioner or group practice

Data source: B.C. Ministry of Health. (2021). Attachment to Practice by CHSA, Fiscal Year 2020/2021.



# Questions & Discussion

