

**THE CORPORATION OF THE CITY OF GRAND FORKS**  
**BYLAW NO. 2052**

**A Bylaw to dedicate Nature Parks**

=====

The Municipal Council for the Corporation of the City of Grand Forks, in an open meeting of Council, **ENACTS** as follows:

**1. Citation**

- 1.1 This bylaw may be cited as the “**Nature Park Bylaw No. 2052**”

**2. Definitions**

- 2.1 In this bylaw, unless the context otherwise requires:

“**Ecological Reserve**” means land used or intended to be used for the preservation of the environment or for scientific research and education pertaining to the studies in the inter-relationships between species and the behaviour of unique flora and fauna.

“**Wetland**” is land that is saturated with water long enough to promote wetland or aquatic processes as indicated by poorly drained soils, hydrophytic (water-tolerant) vegetation, and various kinds of biological activity which are adapted to a wet environment.

**3. Regulations**

- 3.2 The use, development and improvement of the said park must be that of an ecological reserve.
- 3.3 No person shall modify or cause to modify the hydrology, vegetation, or wildlife of the park in a way that diminishes the function of the park as a wetland or an ecological reserve.

**4. Schedules**

- 4.1 The lands shown outlined in bold on the Schedules listed below, attached to, and forming part of this bylaw, are dedicated as public parks:

Schedule ‘A’ – Johnson Flats Wetland Nature Park  
Schedule ‘B’ – Observation Mountain Nature Park  
Schedule ‘C’ – Grassland Nature Park  
Schedule ‘D’ – Oxbow Nature Park

**5. Repeal**

- 5.1 The following bylaws and any amendments thereto, are hereby repealed:

- “**Johnson Flats Wetland Nature Park Bylaw No. 2035, 2016**”

Read a first, second, and third time by the Municipal Council this \_\_\_\_ day of \_\_\_\_\_, 2018.

Adopted this \_\_\_\_ day of \_\_\_\_\_, 2018.

\_\_\_\_\_  
Mayor Frank Konrad

\_\_\_\_\_  
Corporate Officer – Daniel Drexler




Schedule 'A' - Johnson Flats Wetland Nature Park

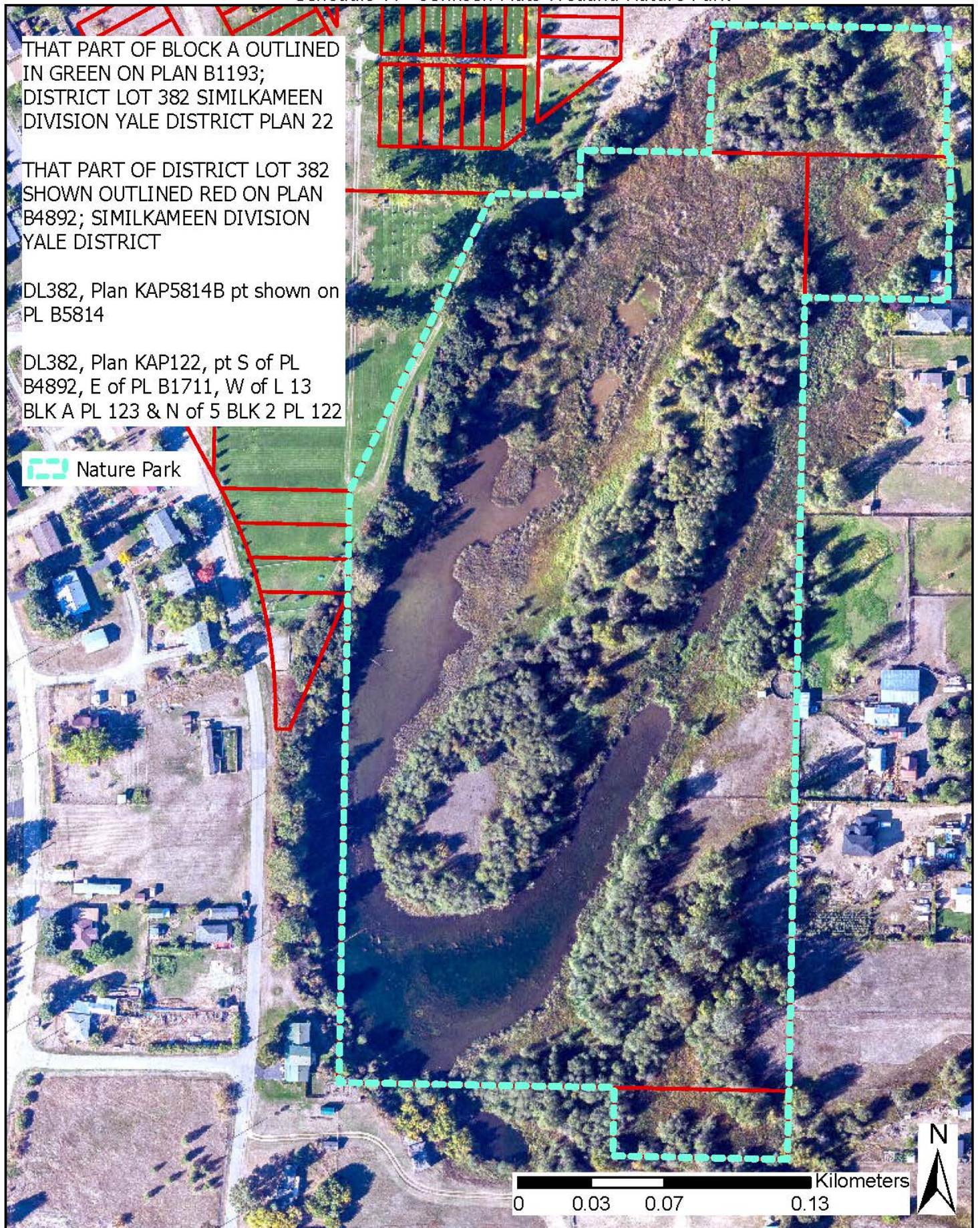
THAT PART OF BLOCK A OUTLINED  
IN GREEN ON PLAN B1193;  
DISTRICT LOT 382 SIMILKAMEEN  
DIVISION YALE DISTRICT PLAN 22

THAT PART OF DISTRICT LOT 382  
SHOWN OUTLINED RED ON PLAN  
B4892; SIMILKAMEEN DIVISION  
YALE DISTRICT

DL382, Plan KAP5814B pt shown on  
PL B5814

DL382, Plan KAP122, pt S of PL  
B4892, E of PL B1711, W of L 13  
BLK A PL 123 & N of 5 BLK 2 PL 122

 Nature Park



0 0.03 0.07 0.13 Kilometers






Entirety of:

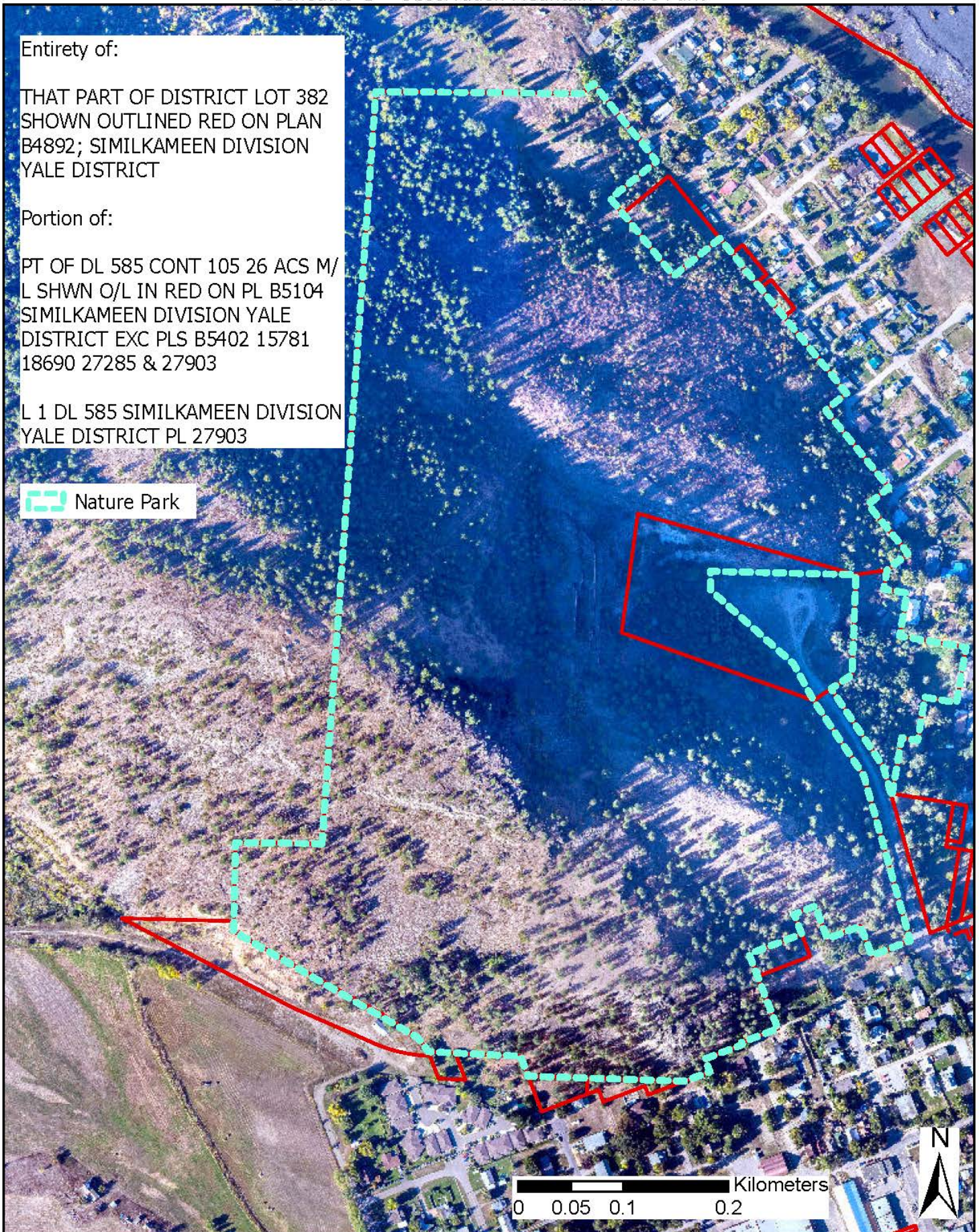
THAT PART OF DISTRICT LOT 382  
SHOWN OUTLINED RED ON PLAN  
B4892; SIMILKAMEEN DIVISION  
YALE DISTRICT

Portion of:

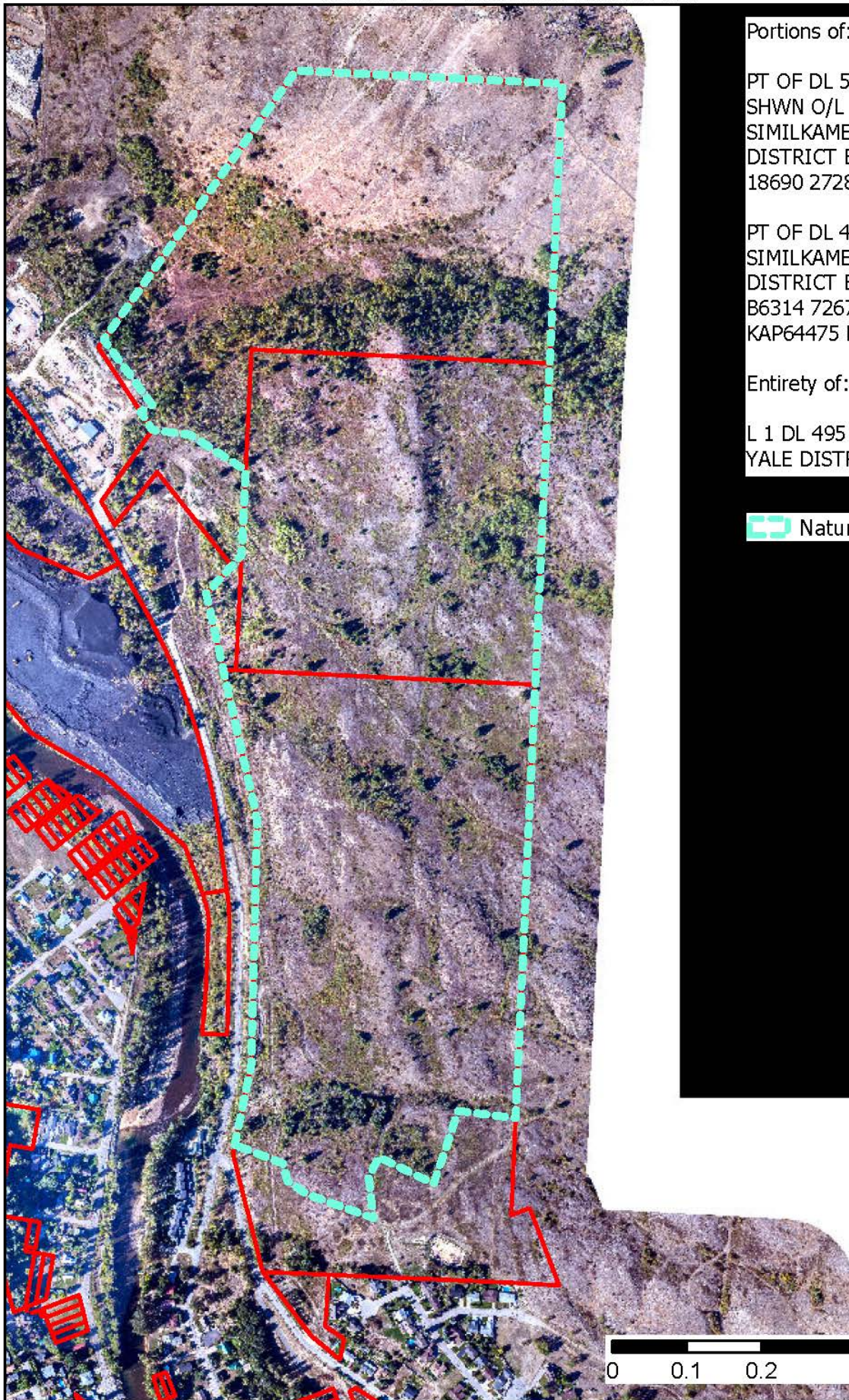
PT OF DL 585 CONT 105 26 ACS M/  
L SHWN O/L IN RED ON PL B5104  
SIMILKAMEEN DIVISION YALE  
DISTRICT EXC PLS B5402 15781  
18690 27285 & 27903

L 1 DL 585 SIMILKAMEEN DIVISION  
YALE DISTRICT PL 27903

 Nature Park








Portions of:

PT OF DL 585 CONT 105 26 ACS M/L  
SHWN O/L IN RED ON PL B5104  
SIMILKAMEEN DIVISION YALE  
DISTRICT EXC PLS B5402 15781  
18690 27285 & 27903

PT OF DL 495 SHWN ON PL B2093  
SIMILKAMEEN DIVISION YALE  
DISTRICT EXC PLS B5146 B5147  
B6314 7267 27381 KAP61265  
KAP64475 KAP67245 & KAP67367

Entirety of:

L 1 DL 495 SIMILKAMEEN DIVISION  
YALE DISTRICT PL KAP71087

 Nature Park

0 0.1 0.2 0.4 Kilometers





Entirety of:

PCL B (DD J64043) OF L 2 BK 3 DL  
380 SIMILKAMEEN DIVISION YALE  
DISTRICT PL 586


L 14 BK 3 DL 380 SIMILKAMEEN  
DIVISION YALE DISTRICT PL 586

L 4 DL 380 SIMILKAMEEN DIVISION  
YALE DISTRICT PL KAP61706

Portion of:

L 3 BK 4 DL 380 SIMILKAMEEN  
DIVISION YALE DISTRICT PL 586

L 4 BK 4 DL 380 SIMILKAMEEN  
DIVISION YALE DISTRICT PL 586

 Nature Park

