

THE CORPORATION OF THE CITY OF GRAND FORKS
BYLAW NO. 2052

A Bylaw to dedicate Nature Parks

=====

The Municipal Council for the Corporation of the City of Grand Forks, in an open meeting of Council, **ENACTS** as follows:

1. Citation

- 1.1 This bylaw may be cited as the “**Nature Park Bylaw No. 2052**”

2. Definitions

- 2.1 In this bylaw, unless the context otherwise requires:

“**Ecological Reserve**” means land used or intended to be used for the preservation of the environment or for scientific research and education pertaining to the studies in the inter-relationships between species and the behaviour of unique flora and fauna.

“**Wetland**” is land that is saturated with water long enough to promote wetland or aquatic processes as indicated by poorly drained soils, hydrophytic (water-tolerant) vegetation, and various kinds of biological activity which are adapted to a wet environment.

3. Regulations

- 3.2 The use, development and improvement of the said park must be that of an ecological reserve.
- 3.3 No person shall modify or cause to modify the hydrology, vegetation, or wildlife of the park in a way that diminishes the function of the park as a wetland or an ecological reserve.

4. Schedules

- 4.1 The lands shown outlined in bold on the Schedules listed below, attached to, and forming part of this bylaw, are dedicated as public parks:

Schedule ‘A’ – Johnson Flats Wetland Nature Park
Schedule ‘B’ – Observation Mountain Nature Park
Schedule ‘C’ – Grassland Nature Park
Schedule ‘D’ – Oxbow Nature Park

5. Repeal

- 5.1 The following bylaws and any amendments thereto, are hereby repealed:

- “**Johnson Flats Wetland Nature Park Bylaw No. 2035, 2016**”

Read a first, second, and third time by the Municipal Council this 4th day of September, 2018.

Adopted this 24th day of September, 2018.

Mayor Frank Konrad

Corporate Officer – Daniel Drexler


Schedule 'A' - Johnson Flats Wetland Nature Park

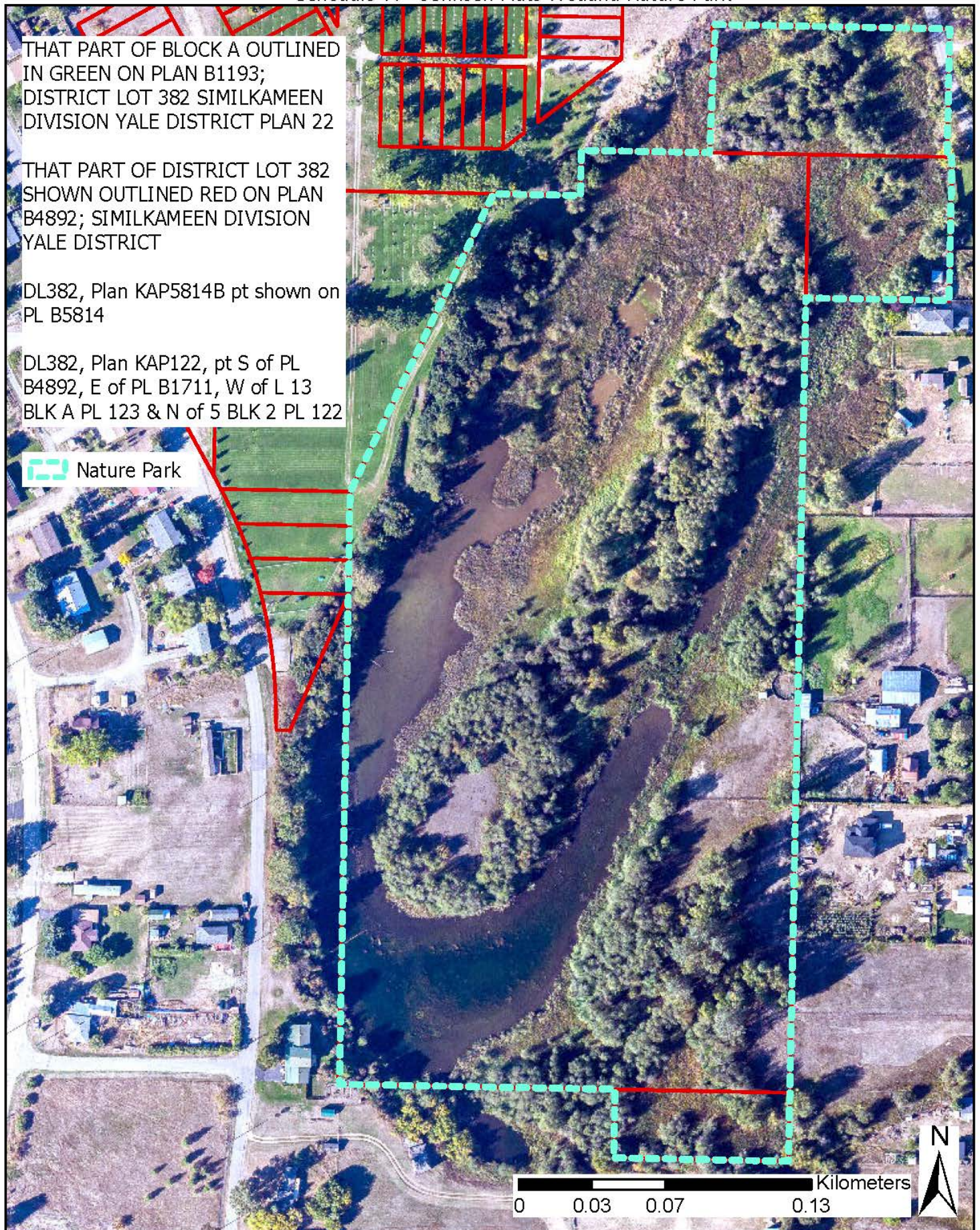
THAT PART OF BLOCK A OUTLINED
IN GREEN ON PLAN B1193;
DISTRICT LOT 382 SIMILKAMEEN
DIVISION YALE DISTRICT PLAN 22

THAT PART OF DISTRICT LOT 382
SHOWN OUTLINED RED ON PLAN
B4892; SIMILKAMEEN DIVISION
YALE DISTRICT

DL382, Plan KAP5814B pt shown on
PL B5814

DL382, Plan KAP122, pt S of PL
B4892, E of PL B1711, W of L 13
BLK A PL 123 & N of 5 BLK 2 PL 122

 Nature Park




Entirety of:

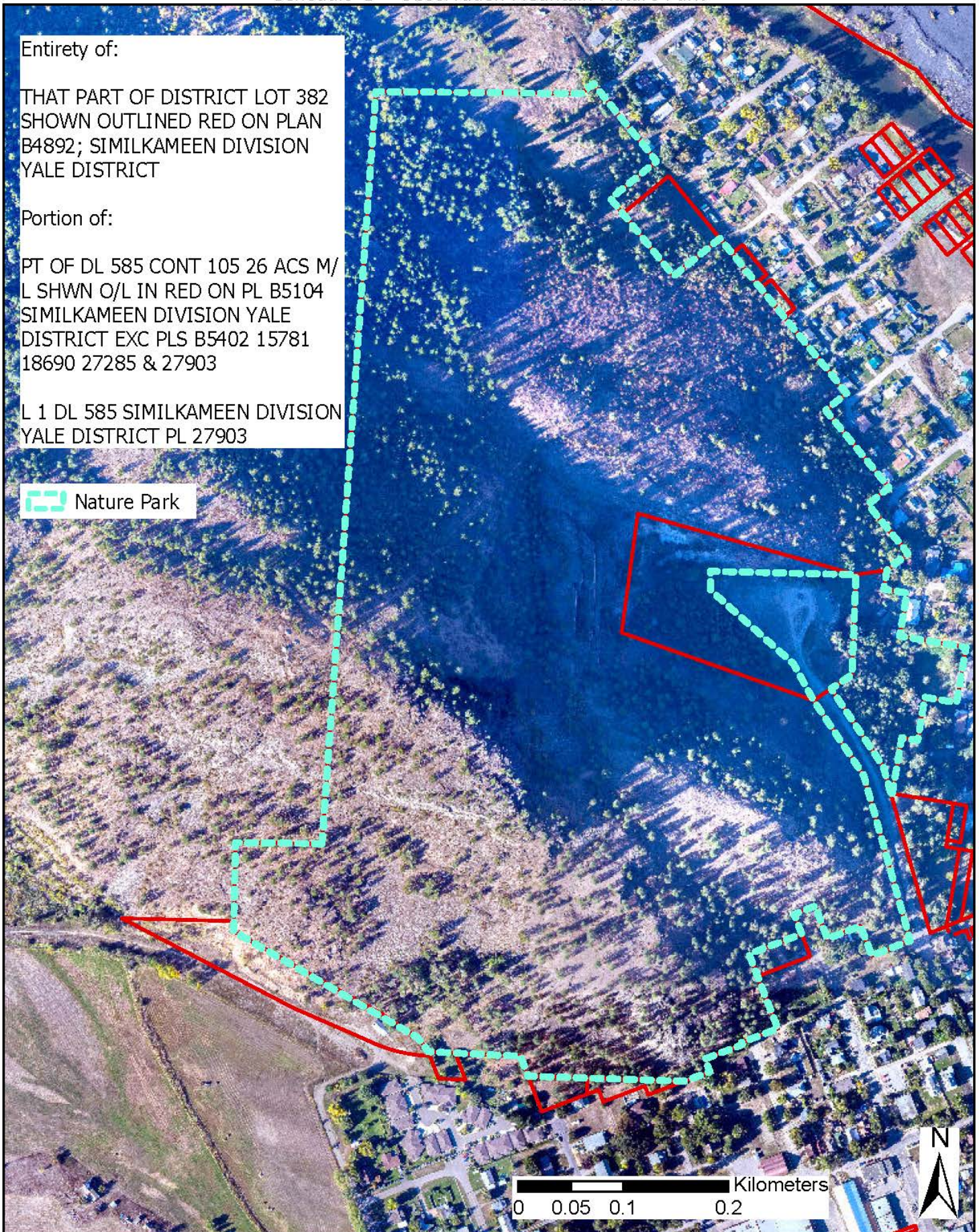
THAT PART OF DISTRICT LOT 382
SHOWN OUTLINED RED ON PLAN
B4892; SIMILKAMEEN DIVISION
YALE DISTRICT

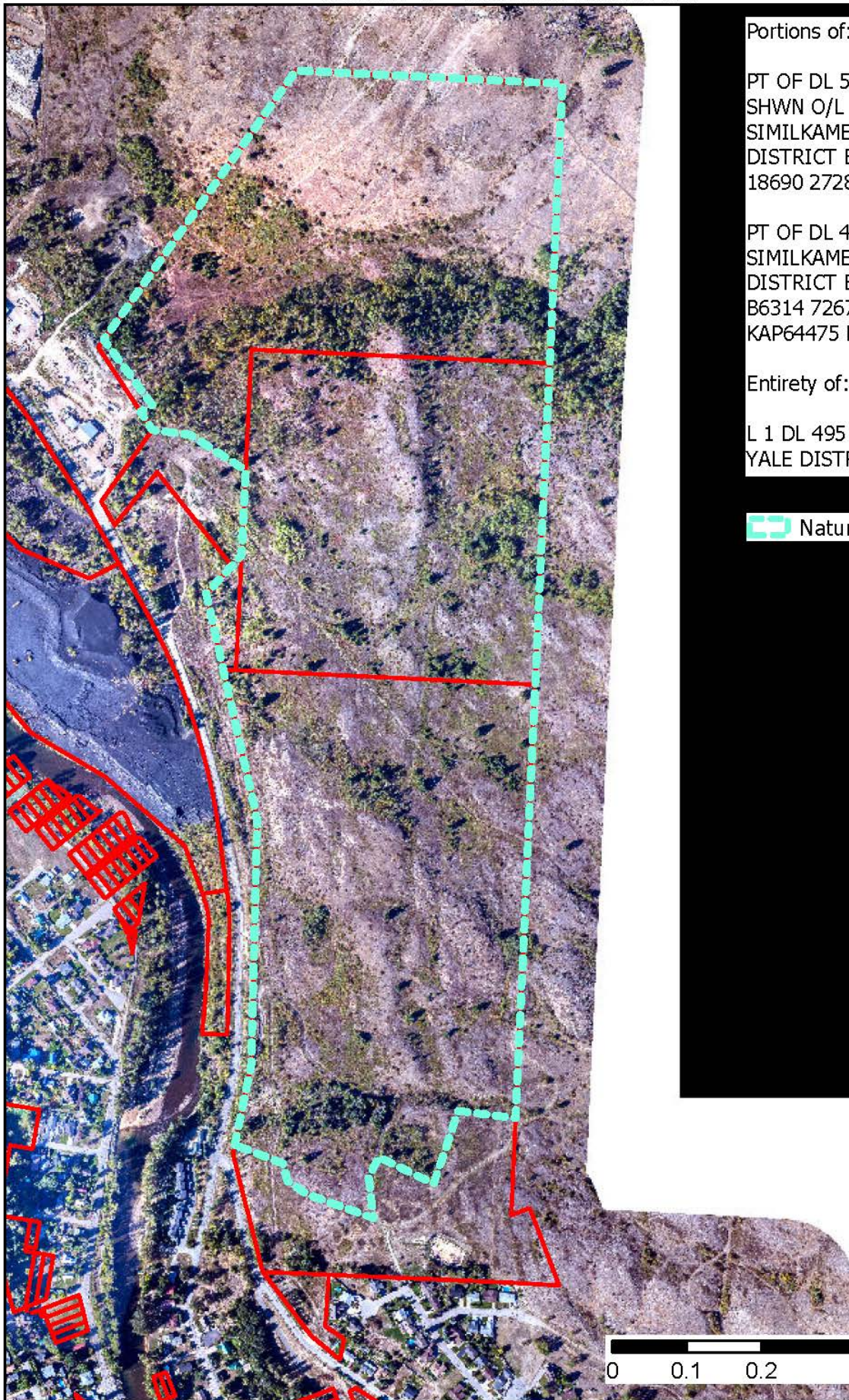
Portion of:

PT OF DL 585 CONT 105 26 ACS M/
L SHWN O/L IN RED ON PL B5104
SIMILKAMEEN DIVISION YALE
DISTRICT EXC PLS B5402 15781
18690 27285 & 27903

L 1 DL 585 SIMILKAMEEN DIVISION
YALE DISTRICT PL 27903

 Nature Park






Portions of:

PT OF DL 585 CONT 105 26 ACS M/L
SHWN O/L IN RED ON PL B5104
SIMILKAMEEN DIVISION YALE
DISTRICT EXC PLS B5402 15781
18690 27285 & 27903

PT OF DL 495 SHWN ON PL B2093
SIMILKAMEEN DIVISION YALE
DISTRICT EXC PLS B5146 B5147
B6314 7267 27381 KAP61265
KAP64475 KAP67245 & KAP67367

Entirety of:

L 1 DL 495 SIMILKAMEEN DIVISION
YALE DISTRICT PL KAP71087

 Nature Park

Entirety of:

PCL B (DD J64043) OF L 2 BK 3 DL
380 SIMILKAMEEN DIVISION YALE
DISTRICT PL 586


L 14 BK 3 DL 380 SIMILKAMEEN
DIVISION YALE DISTRICT PL 586

L 4 DL 380 SIMILKAMEEN DIVISION
YALE DISTRICT PL KAP61706

Portion of:

L 3 BK 4 DL 380 SIMILKAMEEN
DIVISION YALE DISTRICT PL 586

L 4 BK 4 DL 380 SIMILKAMEEN
DIVISION YALE DISTRICT PL 586

 Nature Park

