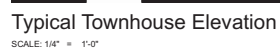


- Material Legend
- | | |
|----|----------------------------------|
| A1 | Horizontal Siding - Arctic White |
| A2 | Trim + Batten - Arctic White |
| A3 | Panel - Arctic White |
| B1 | Horizontal Siding - Iron Gray |
| B2 | Trim + Batten - Iron Gray |
| B3 | Panel - Iron Gray |
| C1 | Vinyl Window - Black |
| C2 | Vinyl Window - White |
| D1 | Aluminum Railing - Black |
| D2 | Aluminum Railing - White |
| E1 | Finished Concrete |
| E2 | Parging Grey |





E5 West Apartment Elevation

SCALE: 3/32" = 1'-0"



E6 North Site Elevation

SCALE: 3/32" = 1'-0"



Suite 501, 110 - 12th Avenue SW
Calgary, Alberta, Canada, T2N 0E7
403.470.7000
www.s2architecture.com

Colour Project Elevations

19TH STREET GRAND FORKS BC
GRAND FORKS MULTI-FAMILY
HORIZON NORTH

218229



This drawing supersedes previous issues. Do not scale these drawings.
Verify all dimensions, elevations and datums, and report any discrepancies to the Architect prior to construction. Dimensions are taken to face of exterior sheathing, face of concrete block, face of stud for interior partitions, and centreline of demising walls, unless noted otherwise on the drawing.
All drawings remain the property of the Architect. These drawings are Copyright 2013, S2 Architecture. These drawings may not be reproduced without the permission of the Architect.

REVISIONS	DATE
1	
2	
3	
4	
5	
6	
7	
8	
9	
10	
11	
12	
13	
14	
15	
16	
17	
18	
19	
20	
21	
22	
23	
24	
25	
26	
27	
28	
29	
30	
31	
32	
33	
34	
35	
36	
37	
38	
39	
40	
41	
42	
43	
44	
45	
46	
47	
48	
49	
50	
51	
52	
53	
54	
55	
56	
57	
58	
59	
60	
61	
62	
63	
64	
65	
66	
67	
68	
69	
70	
71	
72	
73	
74	
75	
76	
77	
78	
79	
80	
81	
82	
83	
84	
85	
86	
87	
88	
89	
90	
91	
92	
93	
94	
95	
96	
97	
98	
99	
100	

SCALE AS NOTED
DATE Tuesday, January 29, 2019
DRAWN BY lal
CHECKED BY bc

DRAWING NO.

DP 501



Suite 501, 110 - 12th Avenue SW
Calgary, Alberta, Canada, T2N 0E7
T 403.470.7000
www.s2architecture.com

Colour Project Elevations

19TH STREET GRAND FORKS BC

GRAND FORKS MULTI-FAMILY

HORIZON NORTH

218229



This drawing supersedes previous issues. Do not scale these drawings.
Verify all dimensions, elevations and datums, and report any discrepancies to the Architect prior to construction. Dimensions are taken to face of exterior sheathing, face of concrete block, face of stud for interior partitions, and centreline of demising walls, unless noted otherwise on the drawing.
All drawings remain the property of the Architect. These drawings are Copyright 2013, S2 Architecture. These drawings may not be reproduced without the permission of the Architect.

REVISIONS	DATE